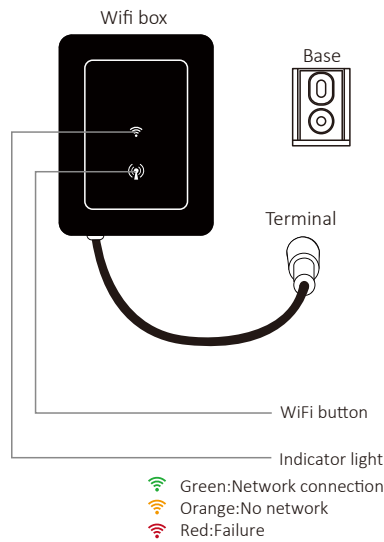


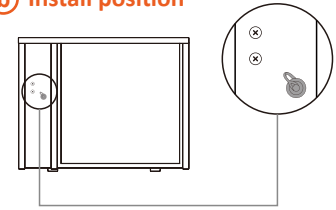
# WIFI



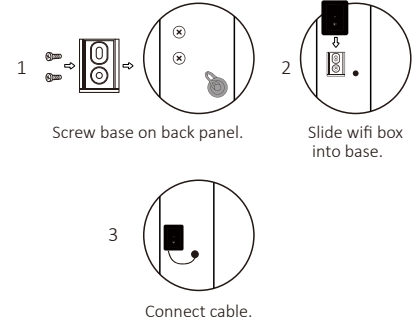
## a Components



## b Install position



## c Installation



## 1 APP Download



Android mobile please download from



iphone please download from

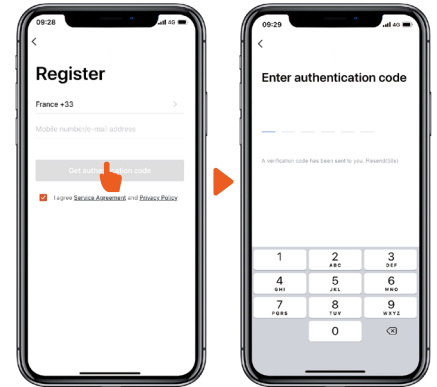


## 2 Account registration

1. Registration by Cell phone number/Email



2. Email registration



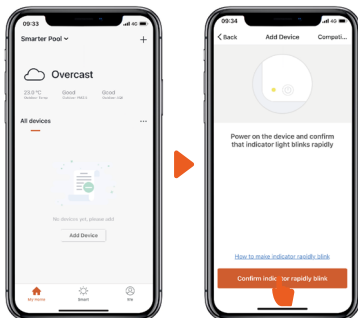
## 3 APP Binding

Please make sure your cell phone has connected the Wifi

1. Press Wifi button (Ⓜ) for 3 seconds until the light in quick flashing.

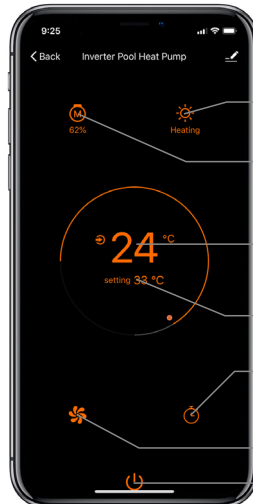


2. Click "Add device", follow indication to finish binding.



## 4 Operation

1. For heat pump with Heating function only :



Indicate the status of heating

Heating capacity percentage

The current swimming pool water temperature

The setting temperature

Timer

Select Smart/Silence Mode

On/Off

2. For heat pump with Heating&Cooling function :



Indicate the status of Heating/Cooling

Heating capacity percentage

The current swimming pool water temperature

The setting temperature

Select Heating/Cooling Function

Timer

Select Smart/Silence Mode

On/Off

Notice:

- If wifi signal can not cover machine, please connect 10 m extend cable (optional, not standard configuration).
- The weather forecast is just for reference.

APP is subject to updating without notice.